

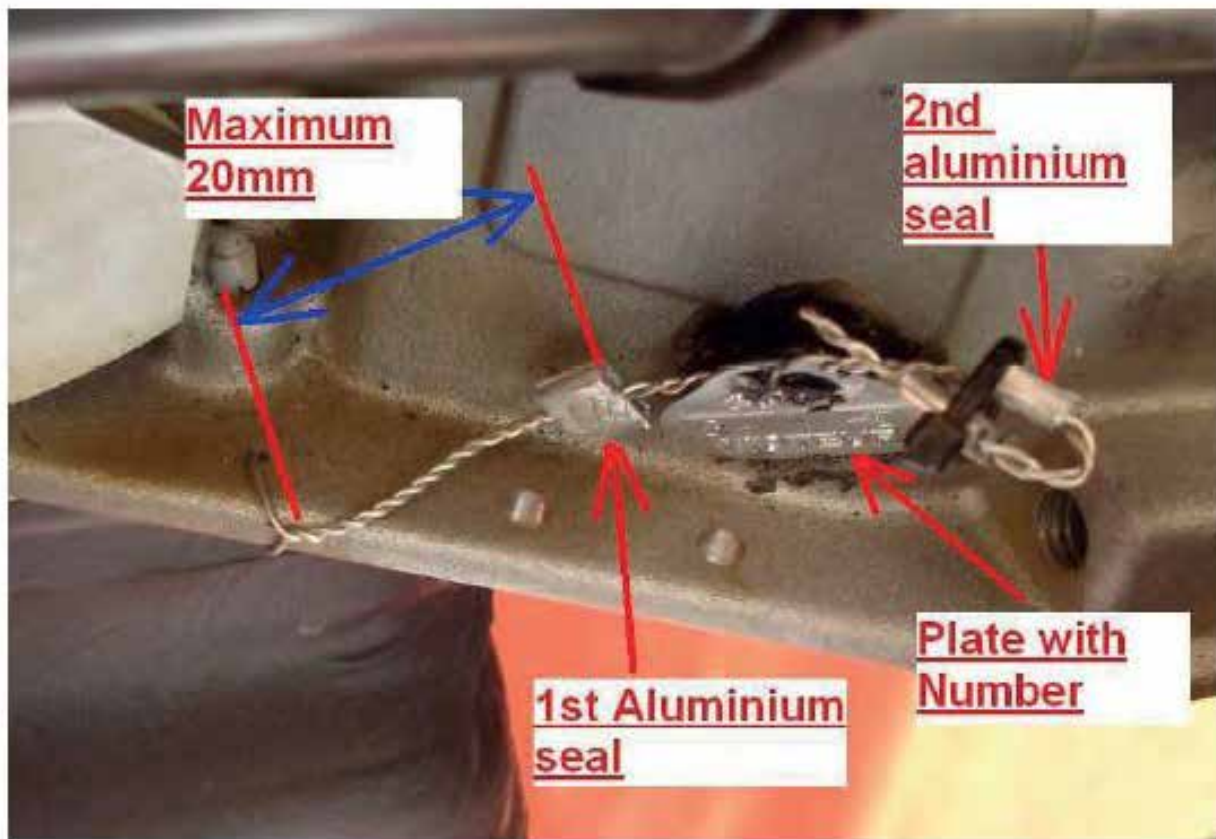
## Appendix 5 - Installation and Operation Instructions

### 5.1 Sealing wire installation

Before entering the scrutineering all cars must have seal wires in visible place as defined:

- **Engine block:** Drilled or casted hole and wire loop through a visible solid part of the block
- **Chassis:** Wire loop around a visible front strut support bar of the rollcage, or if it's not existing, some other tube of the rollcage (both ends welded to another member)
- **Gearbox and transmission:** Through all seams where the unit can be opened
- **Turbochargers:** As described in Appendix J
- **Spares:** As the part mounted in the car

The sealing wire must be wrapped no more than 20mm from the hole and must have at least 20cm loose ends to set the tag and seal. Please see photo below.



**Note: Car will not be allowed to enter scrutineering if sealing wires are not installed beforehand!**